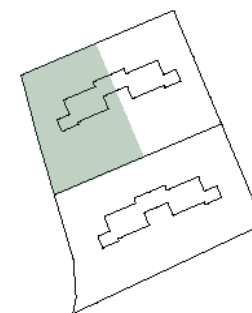
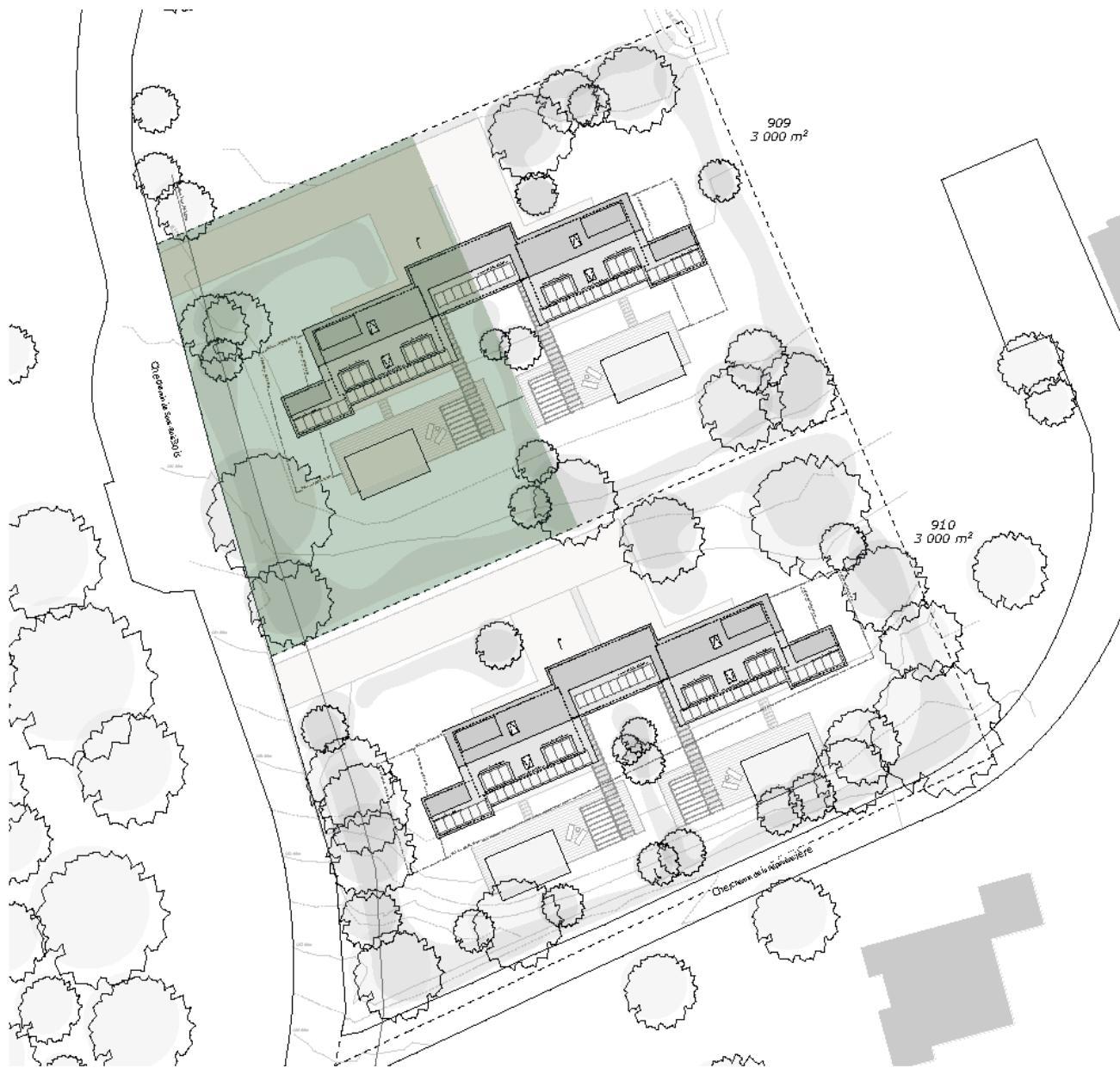
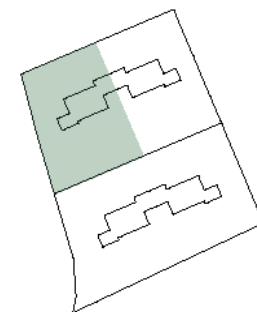


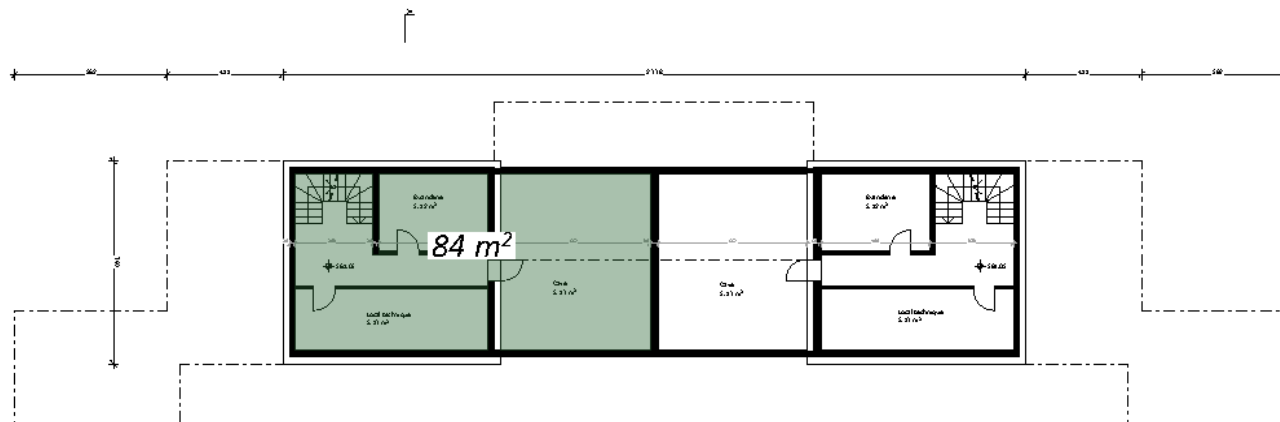
Villa A





VILLA A
VILLA MITOYENNE DE 5.5 PIECES





VILLA A
VILLA MITOYENNE DE 5.5 PIÈCES

Surface de vente nette

Surfaces considérées

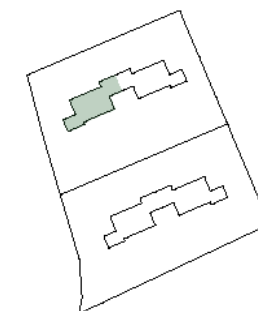
Combles (dés h. 1.30 m)	67	m ²
Raz-de-chaussée	96	m ²
Sous-sol	84	m ²
	247	m²

Surface externe

Terrasse rez : 120 m ² 1/3 (selon USPT)	40	m ²
	40	m²

Surface indicatives

Surface parcelle	3'000	m ²
Surface jardin y.c. terrasse	11.25	m ²
Surface pergola	15	m ²
Surface garage	31	m ²



VILLA A
VILLA MITOYENNE DE 5.5 PIECES

Surface de vente nette

Surfaces considérées

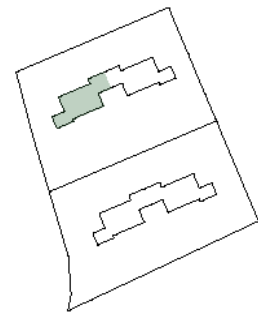
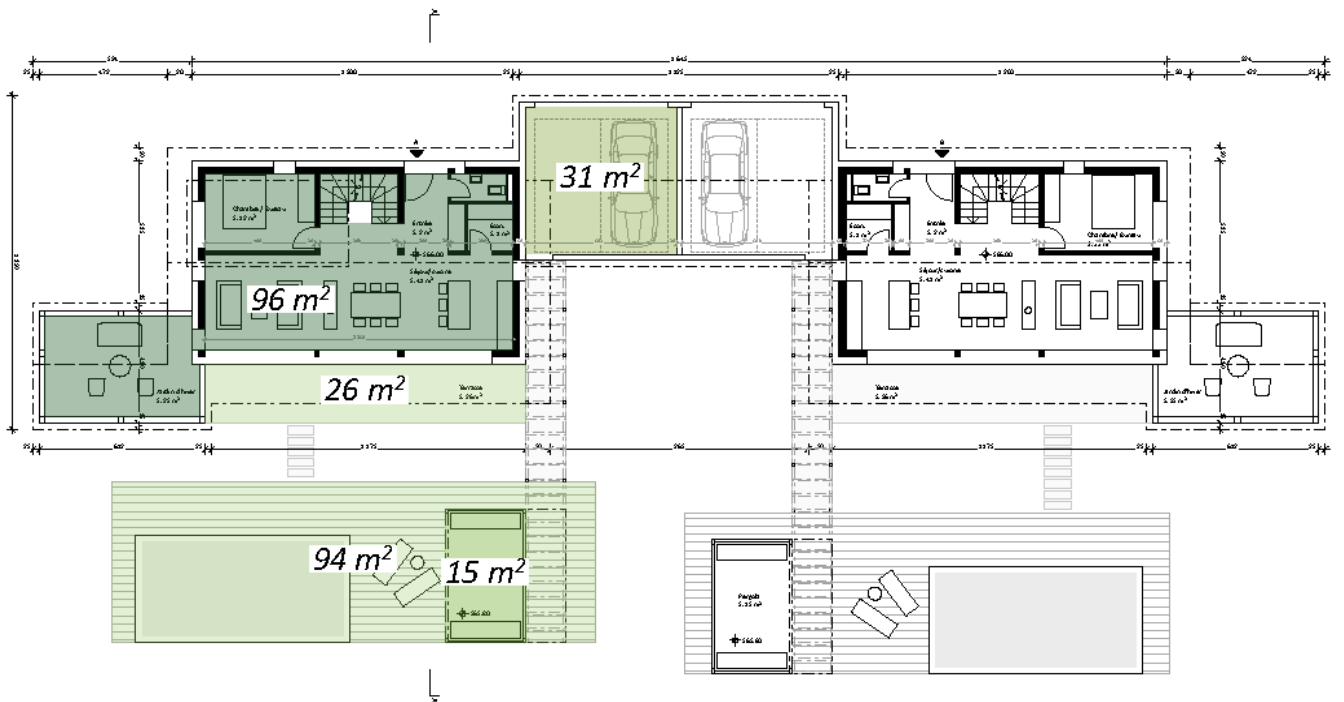
Combles (dés h. 1.30 m)	67	m ²
Rez-de-chaussée	96	m ²
Sous-sol	54	m ²
	247	m²

Surface externe

Terrasse rez : 120 m ²		
1/3 (selon USPT)	40	m ²
	40	m²

Surface indicatives

Surface parcelle	3'000	m ²
Surface jardin y.c. terrasse	11.25	m ²
Surface pergola	15	m ²
Surface garage	31	m ²



VILLA A
VILLA MITOYENNE DE 5.5 PIÈCES

Surface de vente nette

Surfaces considérées

Combles (dés h. 1.30 m)	67	m ²
Raz-de-chaussée	96	m ²
Sous-sol	84	m ²
	247	m²

Surface externe

Terrasse raz : 120 m ²	40	m ²
1/3 (selon USPT)	40	m²

Surface indicatives

Surface parcelle	3'000	m ²
Surface jardin y.c. terrasse	11.25	m ²
Surface pergola	15	m ²
Surface garage	31	m ²

